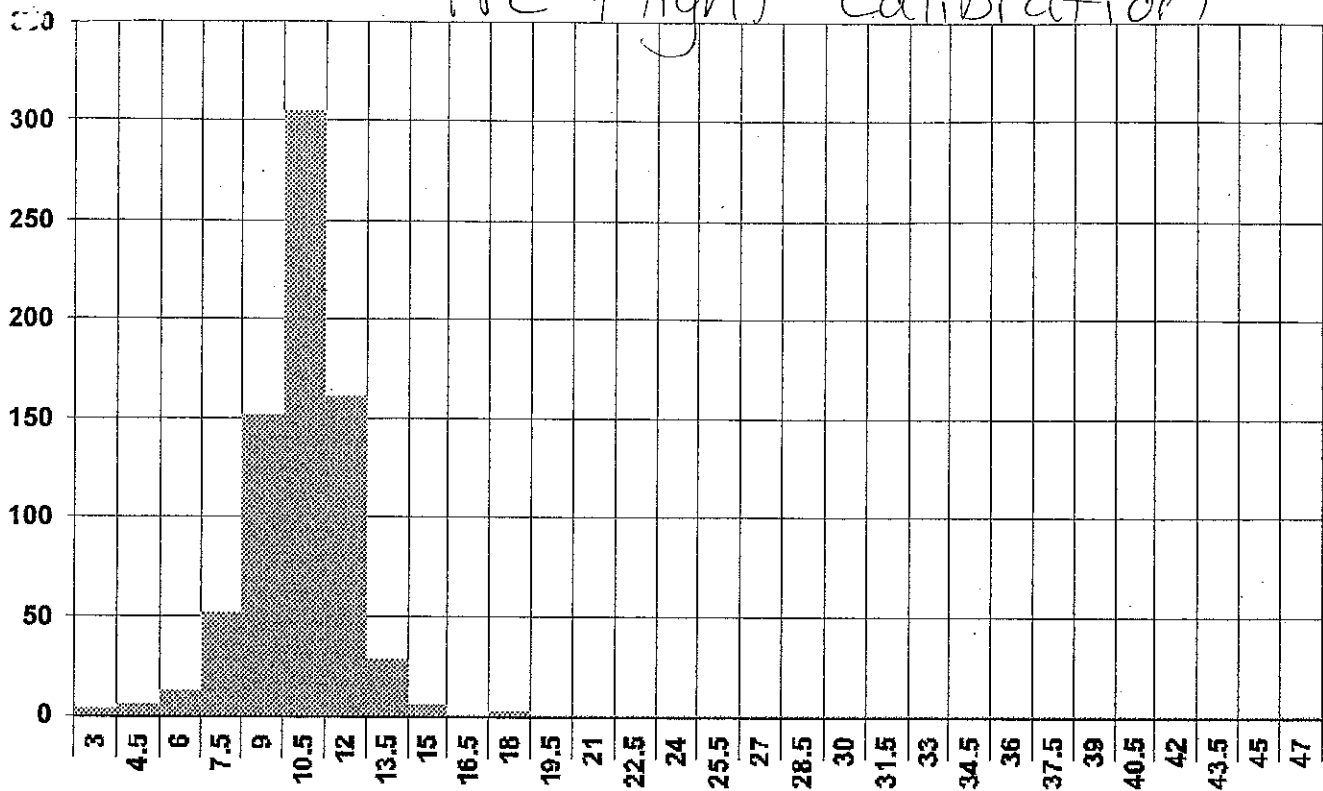


Pre-Flight Calibration



Auto Scale History A-SPP-10C Freeze

Show 3-D 11/01/07 15:15:27 Counts (ct) Clear Dismiss

Print

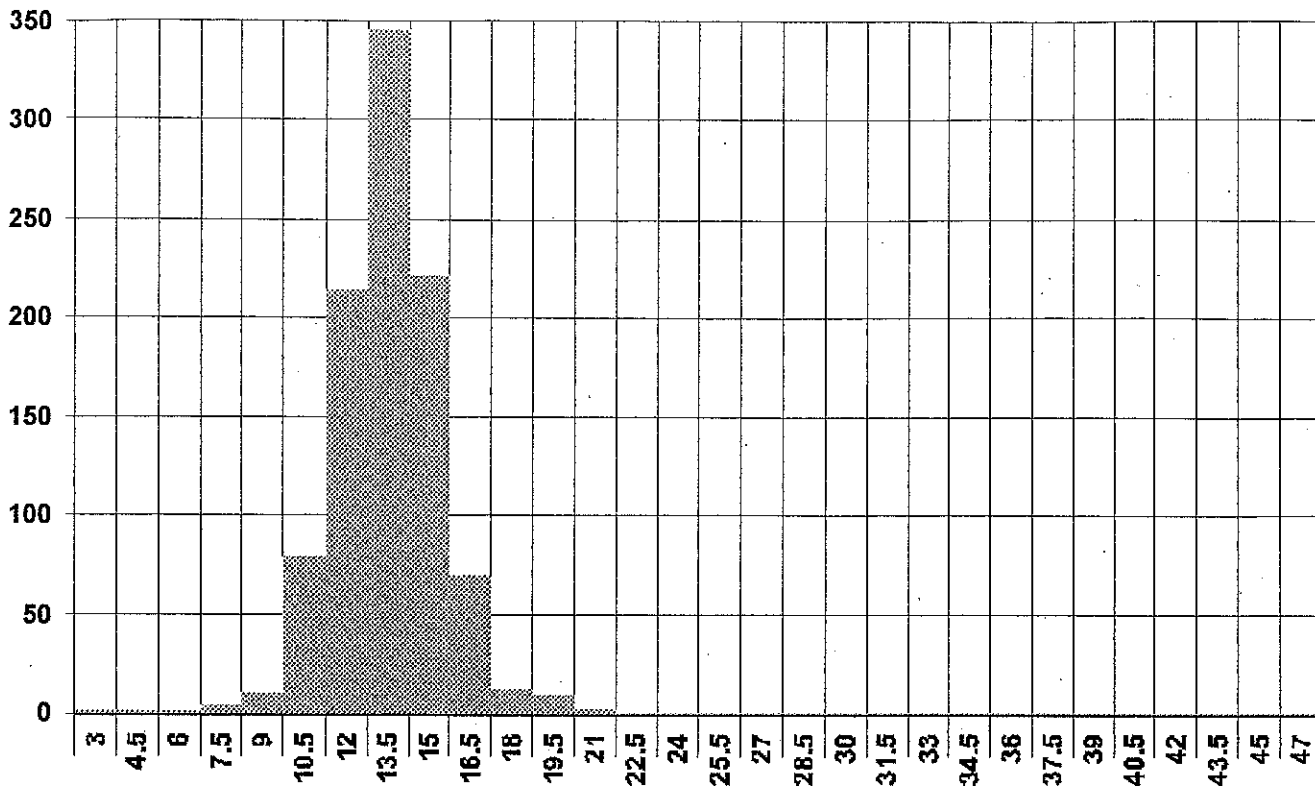
10 μm GLASS

RANGE - 0

DEPTH OF FIELD = 2.70 mm

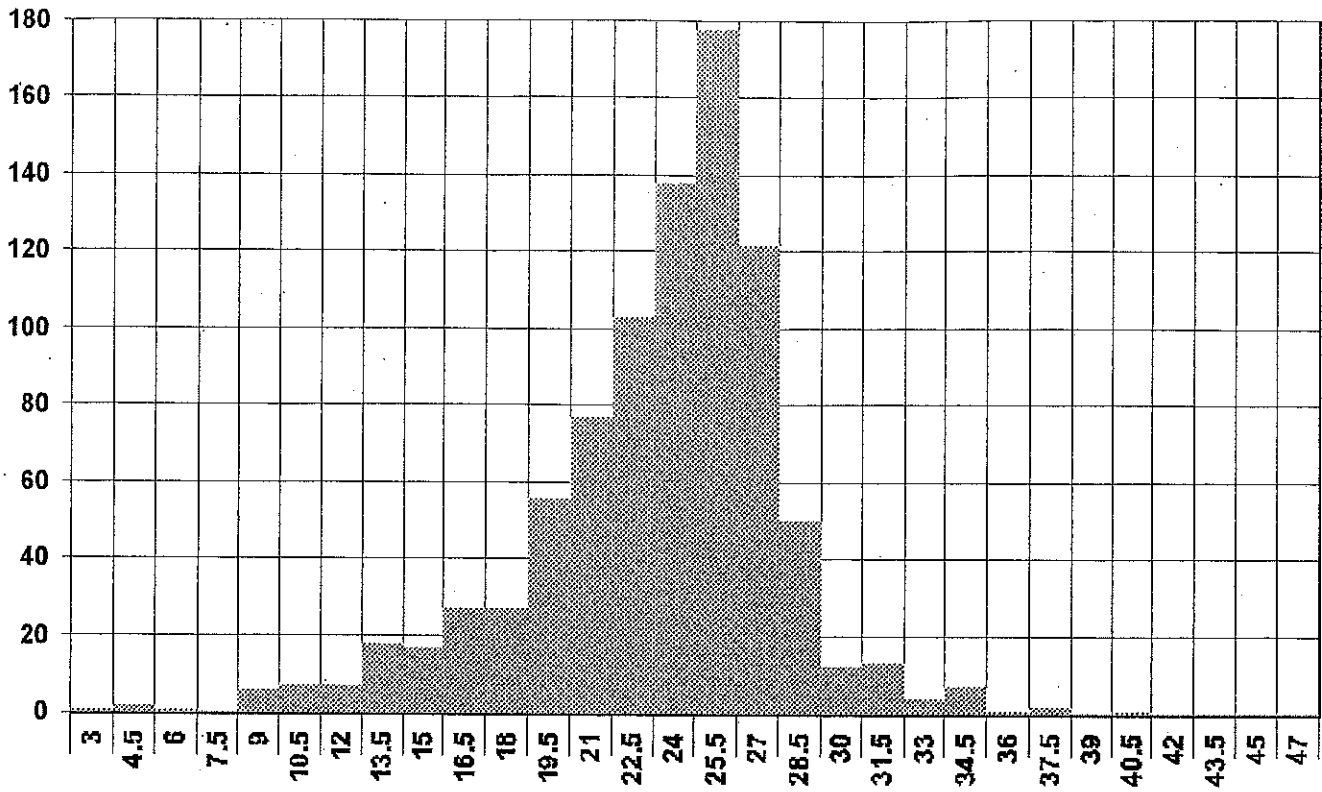
BEAM DIAMETER = 180 μm

Pre-Flight



Auto Scale History A:SPP-10C Freeze
Show 3-D 11/01/07 15:09:27
Print Counts (ct) Clear Dismiss

RANGE-0
15 μm GLASS

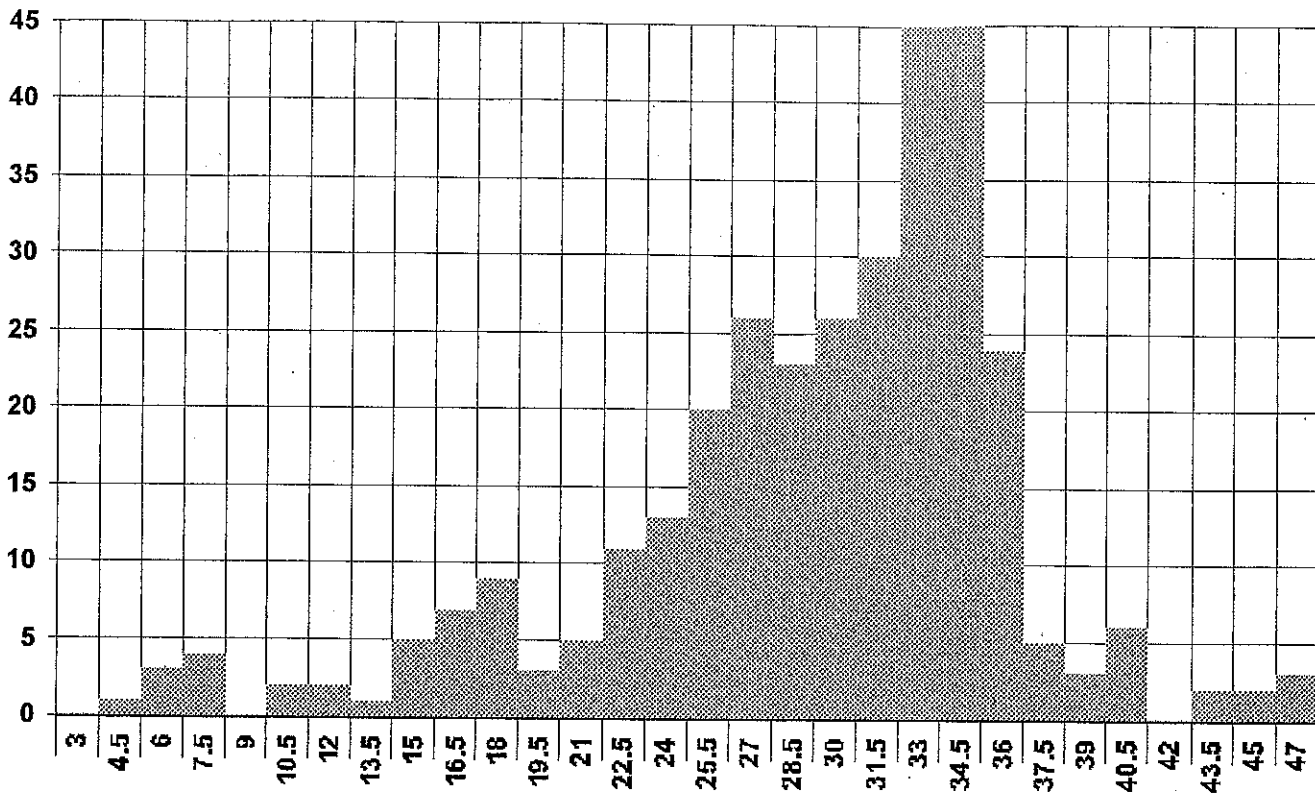


Auto Scale History A:SPP-10C Freeze
 Show 3-D 11/01/07 14:56:54
 Print Counts (ct) Clear Dismiss

RANGE-0

30 μm GLASS

Pre Flight



Auto Scale History A:SPP-100 Freeze
 Show 3-D 11/01/07 15:06:41 Counts (ct) Clear Dismiss
 Print

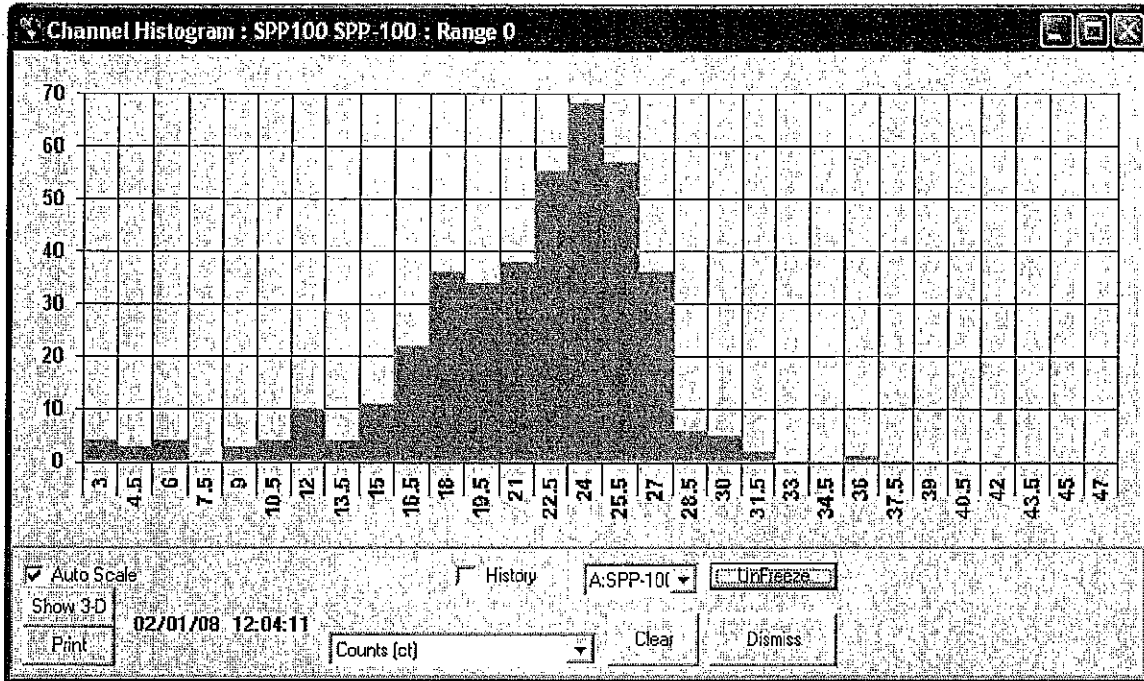
RANGE - 0

40 μ m GLASS

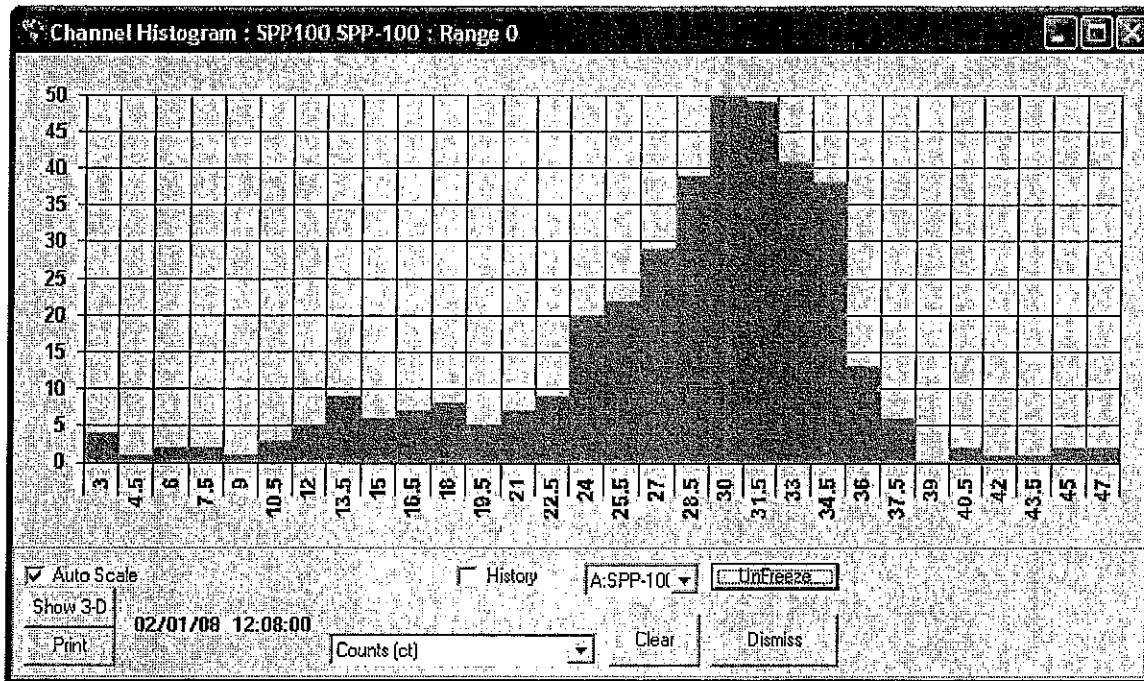
Pre-Flight

Post-Flight Calibration Check

Note: Beads aren't from same bottles as pre-flight

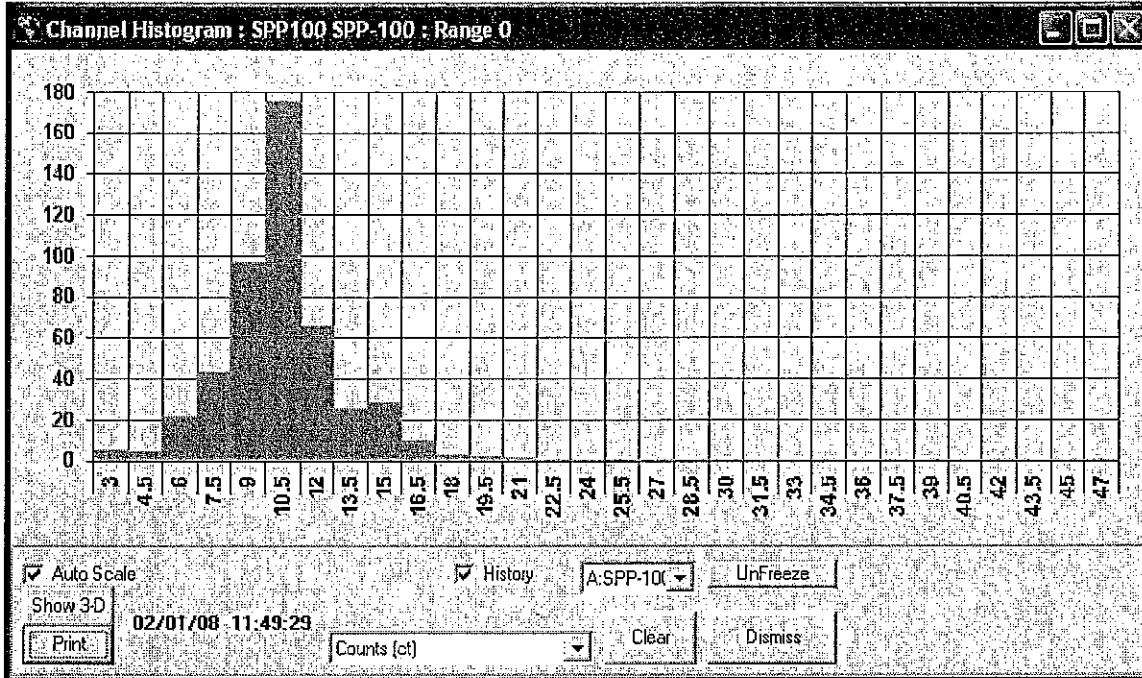


31.9 μm (+- 2.2. μm) glass beads, range 0.

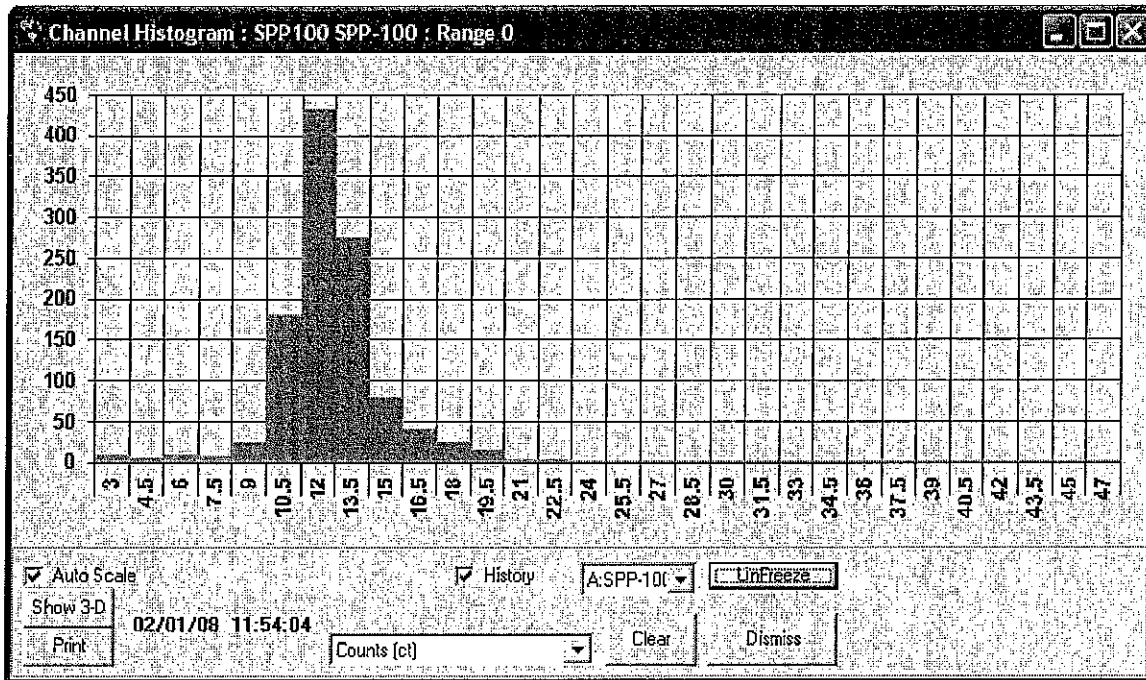


40 μm (+- 2.8 μm) glass beads, range 0.

Post-Flight



10 μm (+- 1 μm) glass, range 0.



14.5 μm (+- 1.0 μm) glass beads, range 0.